



ORTHOLOPHA

The Newsletter of the Aloe, Cactus and Succulent Society of Zimbabwe

PO Box CY300, Causeway

aloesocietyzim@gmail.com

www.aloesocietyzim.com & www.facebook.com/ACSSZ

Issue 15-07 July 2015

Hi Everyone,

Well most of you must be all aloed-out after the May Plant Sale, series of meetings, outings and garden visits held since then. Break a leaf off your favourite aloe and split it open and rub the exposed side over your sweaty brows and around your scrawny or beefy necks. Feel the life-giving gel instantly moisturise and tighten your wrinkles and add years to your sell-by dates.

On second thoughts don't do that. Some are poisonous like those of *Aloe globuligemma* and it would be just my luck to be sending this Newsletter out to permanently late members.

However they are a wonderful family of plants and many have much to offer humankind not only for the beauty they have either in their plant architecture or in the fiery blaze of colour they erupt in when the garden and veld is most in need of a lift! Sunbirds and bees love them. But they have many health benefits too and the ever-rapacious corporate world is seizing the economic opportunities aloes and other succulent plants offer. So I think from next month we will add a health column to this Newsletter and see if little old you and I, can stretch our time on this good Earth with a few home brews taken off plants in our gardens. Or die trying!

Cheers,
Mafungi.

PS Thanks to Malcolm and Caryl for pictures on the Dyke and Ewanrigg

Your Committee

Chairman - Doreen Richards
0772 255784

Vice-chairman – Rob Jarvis
078 3383214

Committee members:

Malcolm Thackray - 0772 516644
Ros Houghton - 0772 115364
Mike Kimberley – 04 339175
Caryl Stutchbury - 0772 611756
Hans Wolbert – 0772 653110
Debra Wolbert - 0772 515436
Gaudencia Kujeke - 0775 376600
Anne-Katrin Maseko - 0772 440131
Mike Caulfield - 0772 241286
Annah Pasipanodya - 0772 572044

Monthly Meeting : Sunday 26 July 2015

This month's meeting is at the home of Caryl and Glenn Stutchbury on outskirts of Harare.

The time: 10.00am for 10:30am

Directions: Travel out of town on Borrowdale Road.

At Helensvale Service Stations, turn RIGHT into Crowhill Road.

Go 1.7km and after Christchurch, turn RIGHT into Carrick Creagh Road.

Go 2.7km and turn LEFT into Borrowdale Brooke Lane (through Police Road Block.)

Go 4km, past the President's house and at T-junction turn RIGHT into Luna Road (strip road.)

Go 300m and turn RIGHT into Sunlands Close.

At the end of the Close, turn LEFT into No 1.

If you need further directions contact Caryl on 0772 611756.

Please remember to bring a plate of eats to share. Don't forget to bring chairs and hats, as well as a labelled plant or other contribution for the raffle. Kari Olivey the Editor of "The Zimbabwean Gardener" magazine will give us a brief talk on waterwise gardening before Caryl tells us about her garden.

Flowering Aloe: July

What is this aloe, on the right?

Send your considered opinions to bo.hoom52@yahoo.com. The judge's decision is final and the winner will get a box of choice Belgian chocolates, provided they are willing to share them.

June's entry was *Aloe howmanii*

Lucky winner in June was Gaudencia Kujeke!!!! She was in fact the only person to eventually guess correctly. This cliff-dwelling aloe from the Chimanmani Mountains has unusual curved leaves, no prickles and blunt-ends!!!

You can claim your prize at the July outing on Sunday 26th July.

You can win a box of chocolates!!!!

Send your entries to Mafungi at bo.hoom52@yahoo.com.



The Aloe above is the July entry. What is it? A clue: This is not indigenous but is much used in landscaping, especially in South Africa.

Photograph taken by Bill Kinsey

The Tolkienesque trees of Buchwa Mountain see the article on Page 4!



Annual Subscriptions:- If you haven't yet paid please do, there are a small number of members not yet paid for 2015.

Subs are only \$20 per person/couple. If you don't see one of the committee members, you can pay the CABS account:

CABS Platinum: Aloe, Cactus and Succulent Society

Acc #: 901 649 1871 Reference: kindly include your full names as a reference in any deposit.

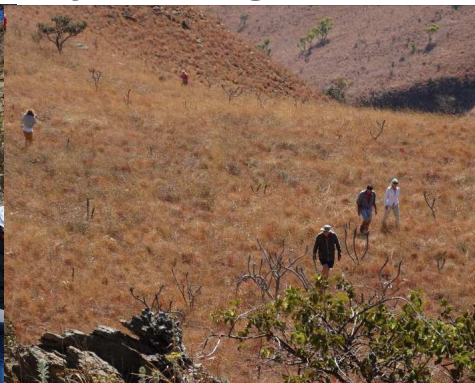
Alternatively send \$21-00 through EcoCash to **0783 911314**



The Society's visit to Ewanrigg on 28 June 2015 was at exactly the right time to see the aloes in full splendour. National Parks are to be congratulated for the vast improvement in this most precious Estate!



Aloe Society Outings in June and July



Earlier this month we went to The Great Dyke and this was a fantastic outing for all who braved the wintry weather. ***Aloe ortholopha*** the main participant in our emblem, did this Society proud! The flowers were literally on fire with rich reds and oranges. Numerous euphorbias and other aloe species were seen as well. The Sterculias were leafless and proudly out in shades of pink and grey. Just like the book.



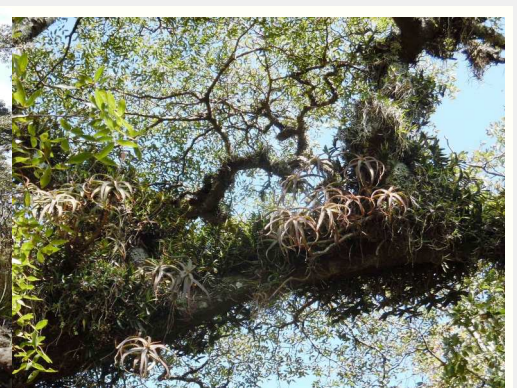
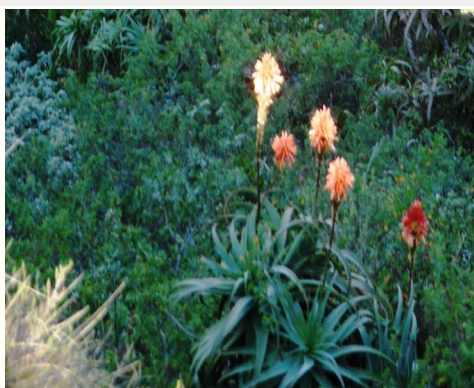
If any members know of interesting places within easy reach of Harare for day excursions preferably when some of our family of plants are in flower or just looking their best, let Ros Houghton know.





The Magical Kingdom of Buchwa Mountain.

Doesn't this picture just tell you everything! I am quite tempted to say nothing more about the trip to Buchwa in early July and you let your imaginations run riot. But then you wouldn't know about the enchanted Musasa forests that blanket the shoulders of this mountain chain, draped as they are in ferns, orchids of every make, dracaenas, cotyledons, cacti (yes *Rhipsalis* was there) and even *Aloe arborescens* which somehow draw on the aggregating organic matter trapped on branches by the moss/fern/orchid combinations. The aloes unfortunately should have been visited earlier but still a few on the colder southern slopes were still flowering, their racemes just making it into the winter sunshine. Only six of us went, it's a long haul there and back, but it was well worth it and the sunrises and sunsets were to die for! Ferny Creek in Shurugwe looks interesting too and another visit is called for by the brave and the bold. Here's to adventures!!!!



Contrary to popular belief, there is both water in the well and light at the end of the tunnel!!!
On Buchwa Mountain.

